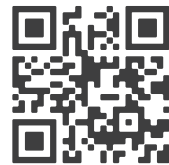
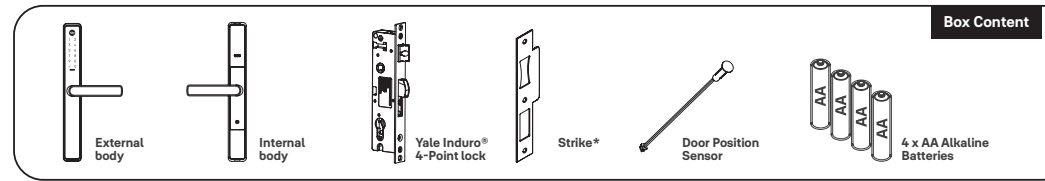


Unity® Slim Smart Lock

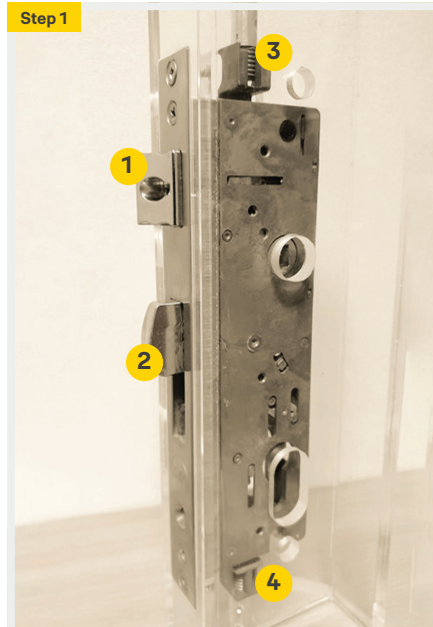
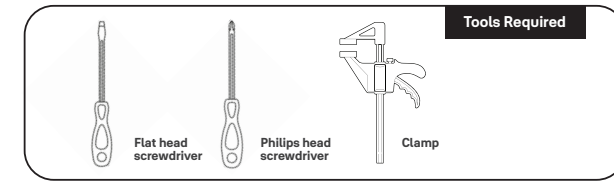
Installation Instructions



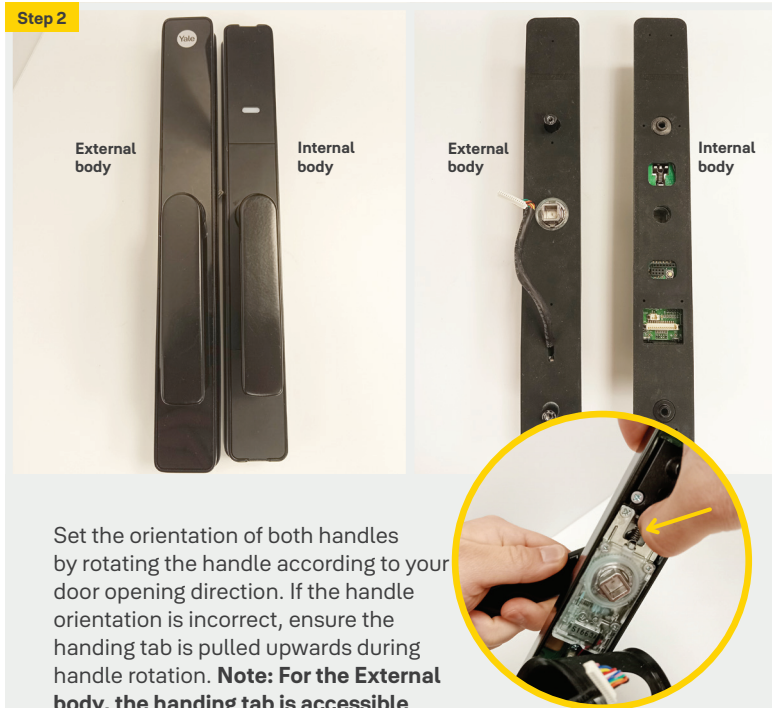
SCAN FOR
PRODUCT GUIDES



*Strike may differ from shown



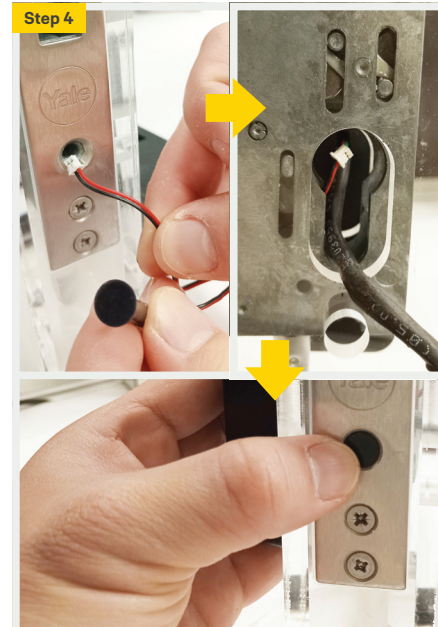
Ensure Yale Induro® 4-Point mortice lock is installed on the door, refer to mortice lock installation instructions.



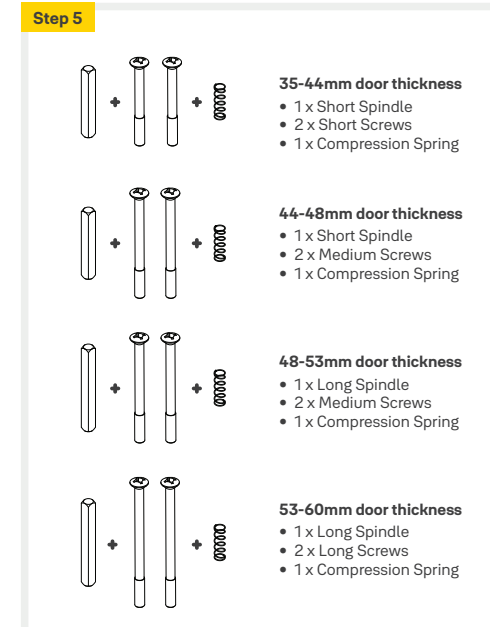
Set the orientation of both handles by rotating the handle according to your door opening direction. If the handle orientation is incorrect, ensure the handing tab is pulled upwards during handle rotation. **Note: For the External body, the handing tab is accessible after peeling the gasket back. Once handing is complete, the gasket must be reinstalled, ensuring gasket spigots are firmly pushed into the relative holes for adequate sealing.**



Carefully use a flat head screwdriver to remove both battery covers. **Important: Do not install the batteries and operate the External or Internal body prior to installation on the door. This may cause the lock to malfunction.**



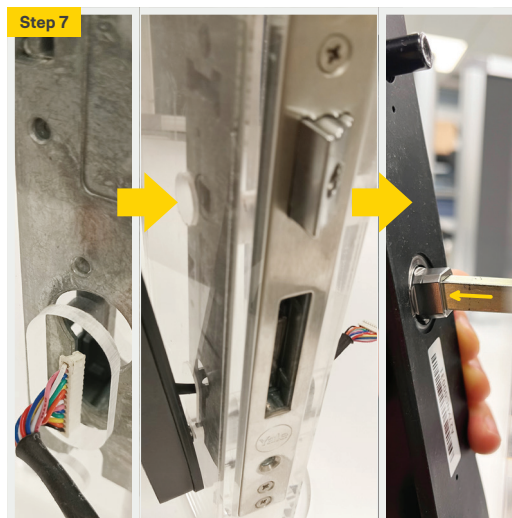
Feed Door Position Sensor wire through front mortice lock hole and exit out the internal side of door. Push Door Position Sensor firmly until it is flush with the lock faceplate.



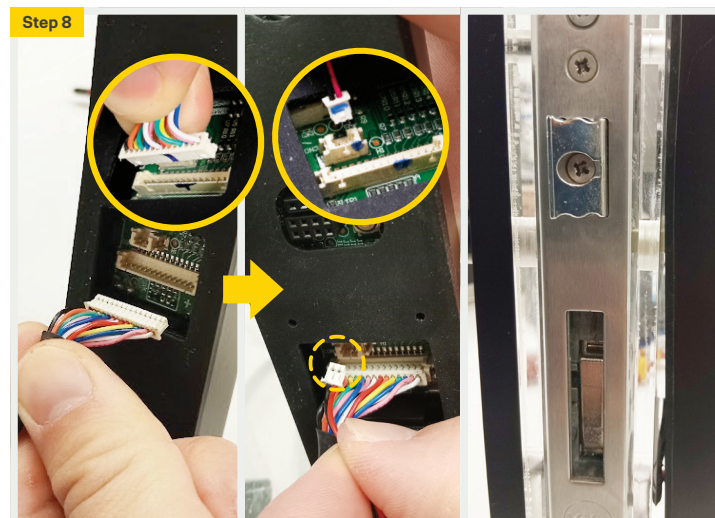
Select screws and spindle based on your door thickness.



Insert compression spring into Internal body handle hole.



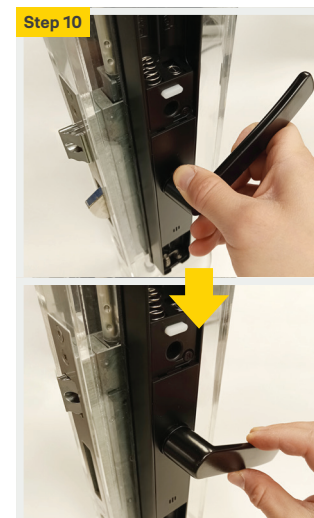
Feed the External body cable through lock cylinder hole. Place External body onto door stile, insert spindle through lock case and spindle hole in External body. A clamp can be used to hold the external body on to the door, in preparation for the next step. **Important: Ensure the cable is not pinched and External body is aligned correctly with door mounting holes.**



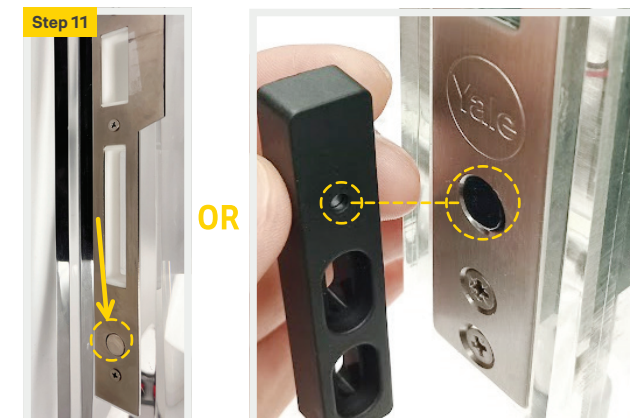
Plug the External Body Cable and the Door Position Sensor cable into Internal body circuit board. Place Internal body onto door stile. A clamp can be used to hold the External and Internal body on to the door, in preparation for the next step. **Important: Plugs can only be installed one way. Do not use excessive force. Ensure the cables are not pinched and Internal body is aligned correctly with door mounting holes.**



Using a screwdriver and mounting screws, fix the Internal and External bodies together.



Test lever functionality by lifting and lowering the internal handle. Lifting the internal handle should engage multipoint locking. Lowering the handle should retract multipoint locking.



Fit strike to door frame, ensuring the magnet on the strike is positioned directly opposite the Door Position Sensor (DPS).

- Refer to photo on the left if using a strike containing DPS magnet.
- Refer to photo on the right if using a DPS magnet housing (may not be included in your kit). This is appropriate for retrofit installations, used alongside an existing strike. Ensure the magnet is positioned directly opposite the DPS.



Insert four AA batteries (two in the top and two in the bottom).

Reinstall the battery covers.

Refer to User Guide to continue to setting up the smart lock.