

Anti Prying Function

Patent Europe 55/72 mortise
Prevent the card prying the door

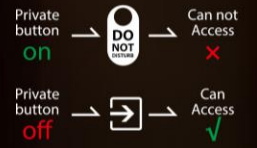
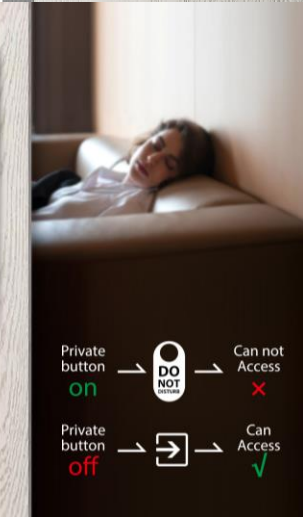
Anti-prying Latch



Waterproof & Dustproof



-20°C ~ 70°C
Working Temperature



**Semiconductor Fingerprint Reader
360° Fingerprint Recognition**



Works with
TTLock APP



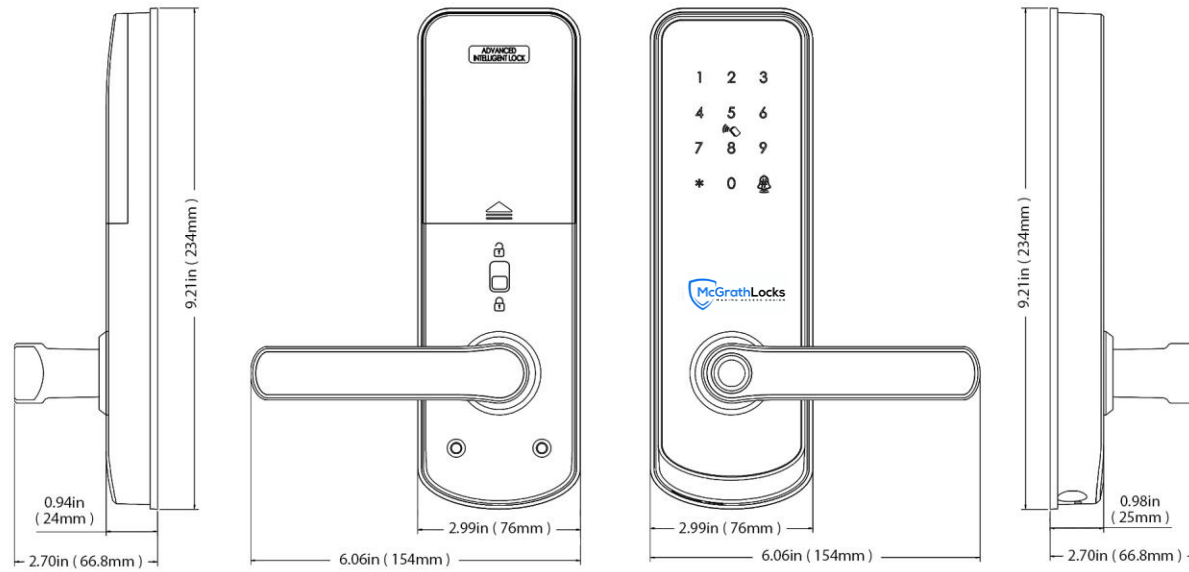
Description

This 5 in 1 digital door lock represents a classic easy entry option for your home. A stylish door lock with a Bluetooth App, pin code, RFID card and fingerprint, manual key to provide quick and convenient access.

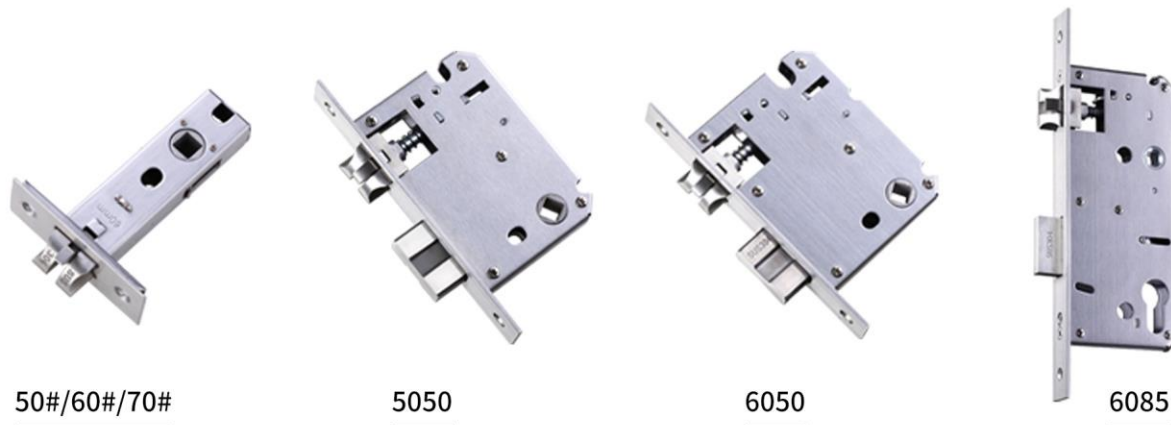
Specifications

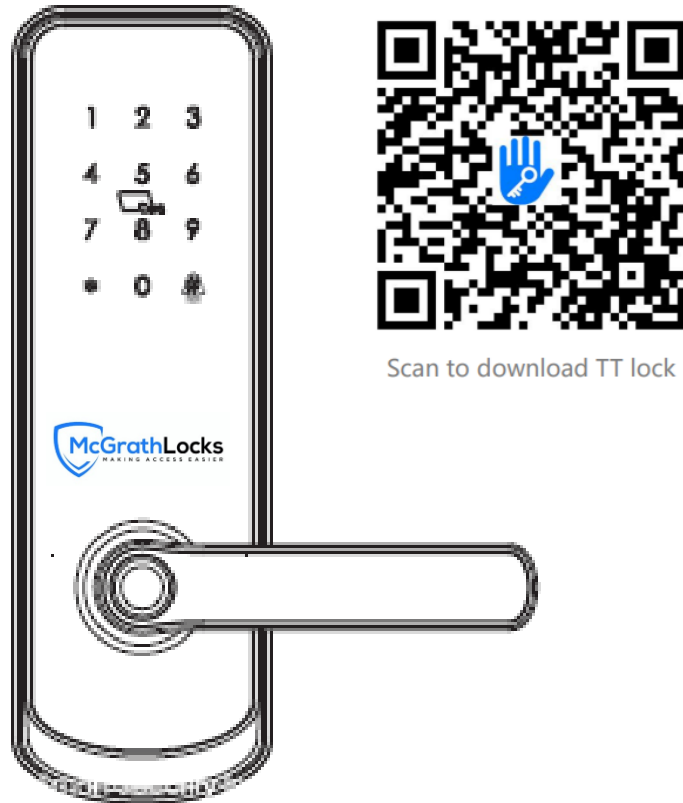
- Unlocking methods: Unlocking: App, PIN, RFID, Fingerprint, Manual key
- Panel Material: Zinc Alloy
- Handle Material: 304# stainless steel
- Keypad Material: Acrylic panel
- Colour: Black, silver
- Mortise option: single latch (50/60/70 back set), or 50/50 mortise
- Size: 72(W) * 233(L)
- Handle size: 152.3mm
- USB charge port in case dead battery: Yes
- Power supply: 4pcs 6V alkaline batteries
- Battery life: more than 12months
- Support Gateway with WiFi: Yes





Mortise Options





Scan to download TT lock



IC Card



Passcode



Key



APP



Fingerprint

INFORMATION AND SAFTY WARNINGS :

1.1 Introduction:

This user manual will guide you through the functions and usages of our MLNX1 Bluetooth enabled smart lock. It is important that you follow the instructions and regard all notes that appear throughout this manual. Consult this manual before you attempt to use the lock. If you have questions not answered by this manual or are in need of non-routine service, contact our customer service (Phone Number)

1.2 Safety Warnings:



When reading this manual, note these icons: notes with this icon MUST be read, understood and obeyed to prevent injury or damage.



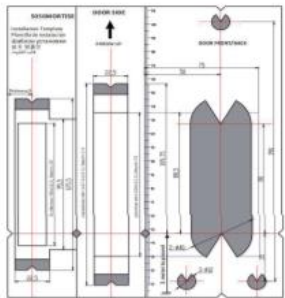
General Usage:

- This lock shall only be used as described in this manual.
- Verify that all parts of the lock are account for. If any parts are missing, contact our customer service.
- In factory default status, the lock is on always open state after you install the lock (no power on). It means handle is free and lock can't be closed, you have to power on the lock with batteries or set admin and pair the lock with app and then the open mode will be changed to private mode automatically.
- Handle directions are reversible, please kindly follow chapter 4 (installation steps3) to change the direction. Should you have any problem, please contact our customer service.
- There is a protective film on the front touch panel, if there are some scratches on the film, don't be scared. The protective film can be removed if you need.
- Use only four AA batteries. Do not mix old and new batteries or batteries from different brands. Never insert objects into the lock other than batteries as described in this manual.
- Verify all surfaces are flat and level before beginning installation, installation on doors or surface with any types of deformity such as gaps or warping may cause the lock to malfunction or fail to operate entirely.
- Never apply any cleaner directly to any part of the lock. Only use clean water and mild cleaner on a soft non-abrasive cloth when cleaning.
- Potential shock warning: do not allow water or liquids to get into lock's electric parts.
- The lock must be used with TT lock app. The lock will function without the app but full functionality may only be achieved when the app is used.

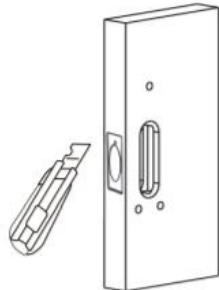
Preparing to install

1.1 Line Drawing

Draw a horizontal centre line inside and outside the door at 1 meter from the ground. Fold the hole template, make the handle centre line align at the door horizontal centre line, then draw out the hole lines at front and side.



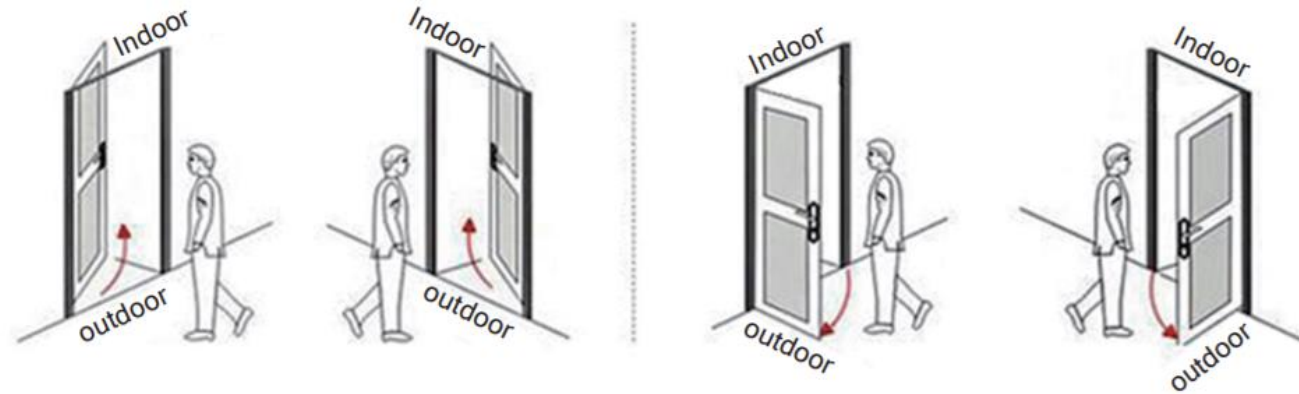
Bore Hole Drawing



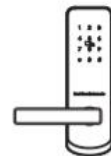
Trepanning



Screwdriver

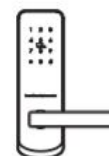


A



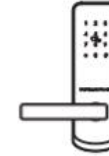
Left Push

B



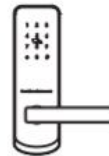
Right Push

C



Left Pull

D



Right Pull

1.2 Determining Lever Handing:

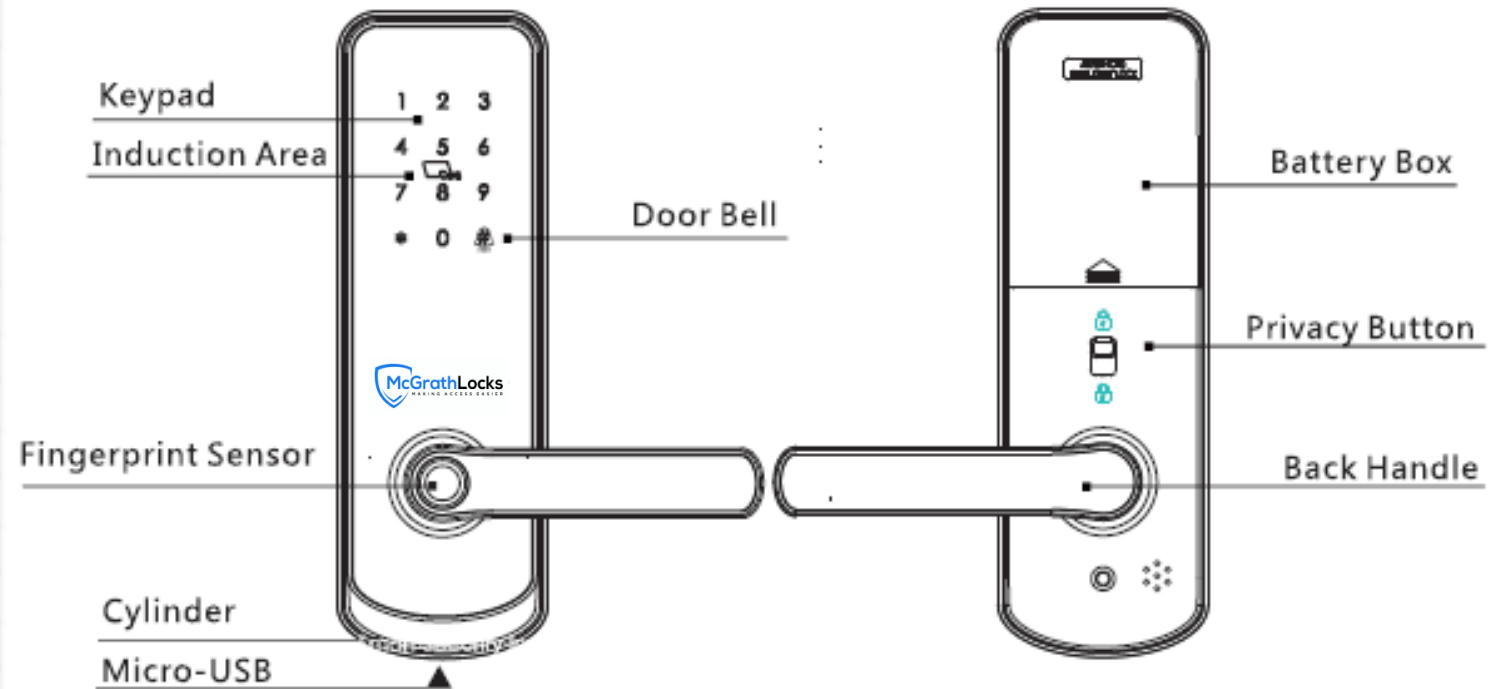


The hand of the door is determined from the secure side of the door. The term “secure” means the side from which you initially unlock and enter from outside.

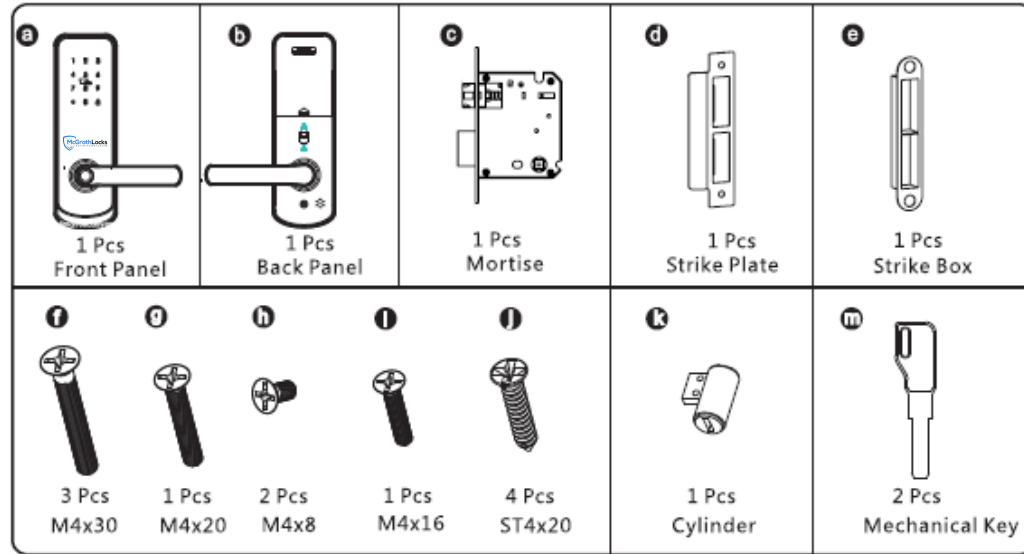
The hand of a door is determined from the secure side of the door. The term "secure" means the side from which you initially unlock and enter.

System specifications

Material	Aluminium alloy, ABS, Acrylic
Available Colour	Satin Nickle and Black Nickle
Door Thickness	38-55(mm)
Communication	Bluetooth 4.0 BLE
Support OS	iOS 7.0 or above, Android 4.4 or above
Battery Life	10000 times normal open(12months)
Power Supply	DC6v:4pcs AA alkaline batteries
Static Current	50uA
Dynamic Current	<200mA
Unlock Way	IC card, Passcode, APP, Wristband, Mechanical Key
Unlock Time	1-1.5seconds
Working Temperature	-20~50 degree
Working Humidity	10%~95%
IP Class	(IP65 External Lock Housing) (IP54 Internal Lock Housing)
Available Mortise	5050/6050 mortise, Tubular latch
WiFi Gateway	Available
Warranty	Refer to McGrath locks Warranty form
Packing	Carton box with EPE inside
User Capacity	200 Cards, 150 Passcodes, 100 Fingerprints, 1 Admin

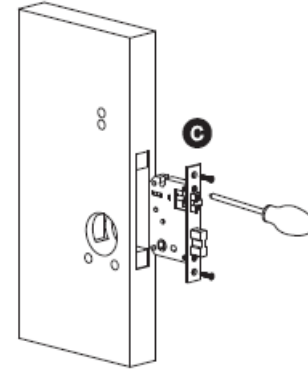


MLNX1 Accessories

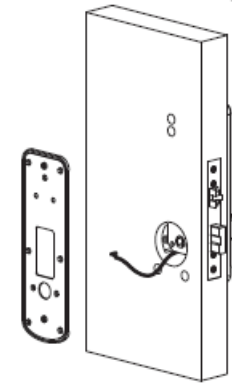


Installation steps

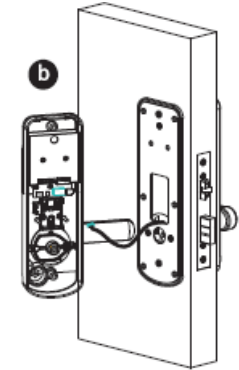
Step 1



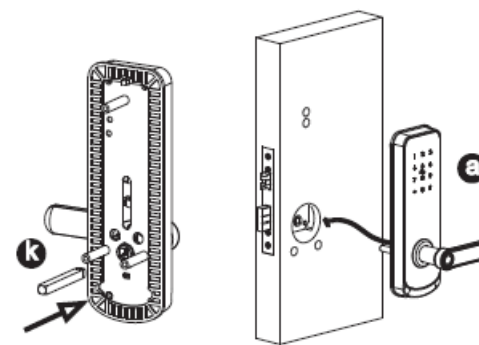
Step 3



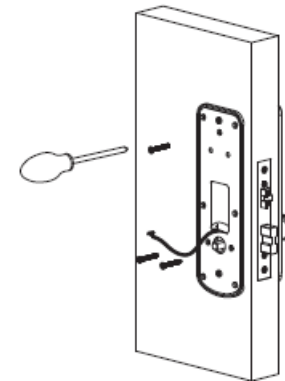
Step 5



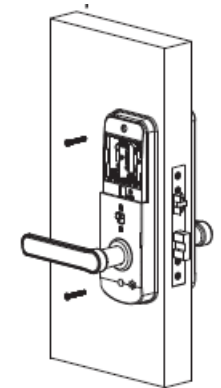
Step 2



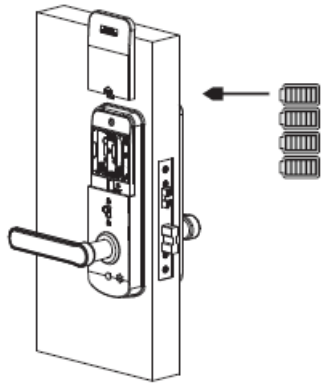
Step 4



Step 6

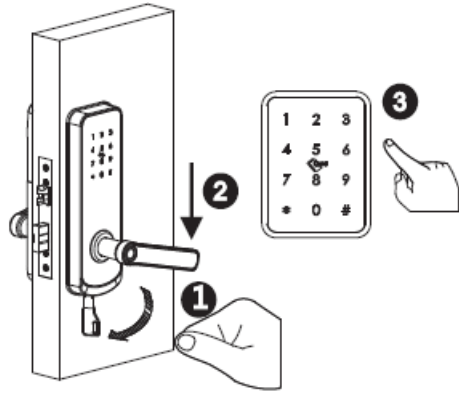


Step 7



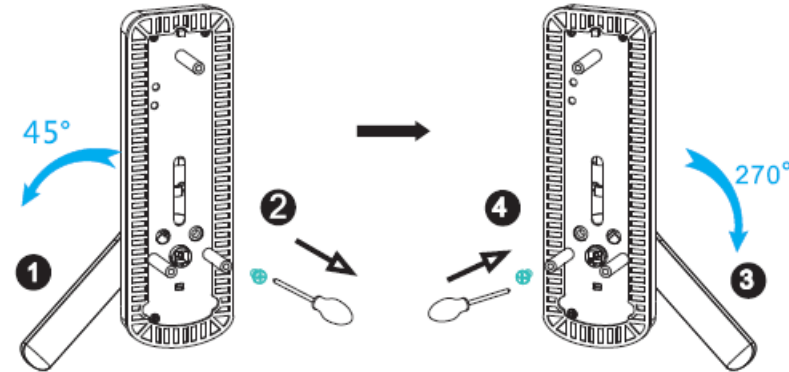
Reset Button

Step 8



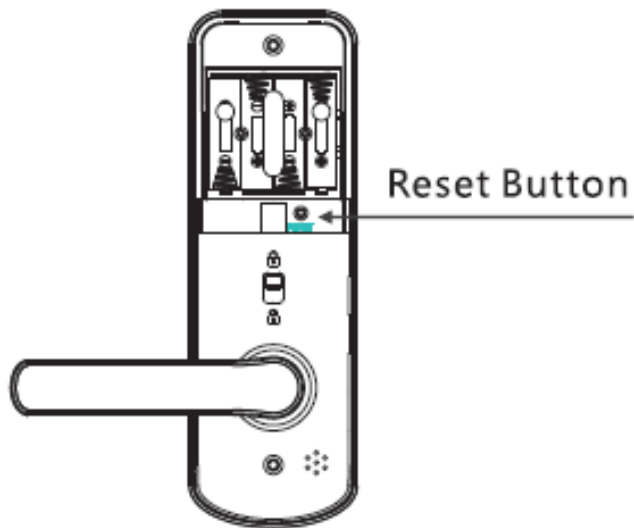
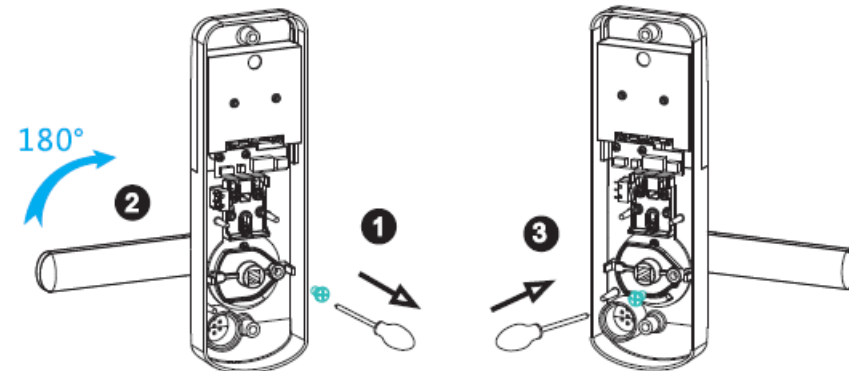
Adjust to left from right direction Front Panel

- 1 Turn the handle 45 degrees.
- 2 Use the allen key to take of the screw in the photo.
- 3 Turn the handle 270 degrees counter clockwise.
- 4 Tighten the screw in the other side.



Adjust to left from right direction Back Panel

- 1 Use the allen key to take of the screw in the photo.
- 2 Turn the handle 180 degrees counter clockwise.
- 3 Tighten the screw in the other side.



Multiple Security, Convenient and Easy to Use

We think what you think



Electronic locking

After enable this function,
only the admin can access
the door outside



Door Bell Function

Press # key to enable the
bell function



Mechanical key for backup use

With manual key for each
lock for emergency use.

Anti-peeping Virtual Password

Over 24 digits virtual password, with 6-12 digits right password

1235689

Virtual Password

666666

Right Password

895134

Virtual Password



High Security IC Card

Available for aged and kids to use when they forgot
passcode or fingerprint is not clear to access

